



# Enhancing Autonomous Vehicle Safety with AI-Powered Pothole Detection

Ashley Strehlow, Katelyn Bale, Prof. Shukri Abotteen

School of Information Technology, Illinois State University, Normal, IL 61761

RTC 2024

## Introduction

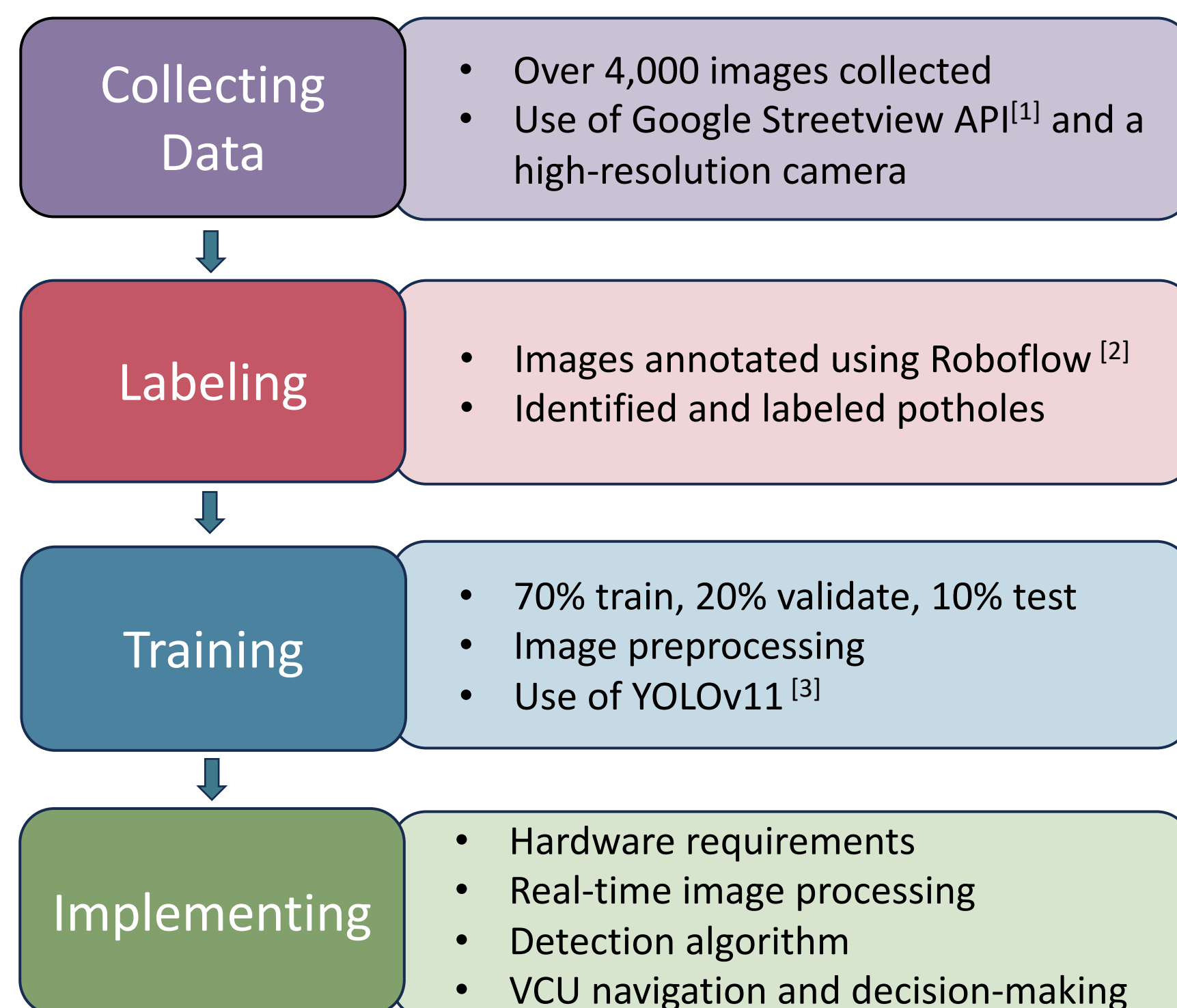
While autonomous vehicles (AVs) are becoming a viable method of transportation, they still face challenges in perception, environment detection, and real-time decision-making. One significant issue is the detection of potholes, which poses safety and reliability concerns. Current AV sensors provide rudimentary solutions but lack dependability, especially for potholes filled with rainwater or under varying lighting conditions. *We aim to address these limitations and enhance the safety of AVs and their passengers by leveraging deep learning techniques for real-time pothole detection.*

## Objectives

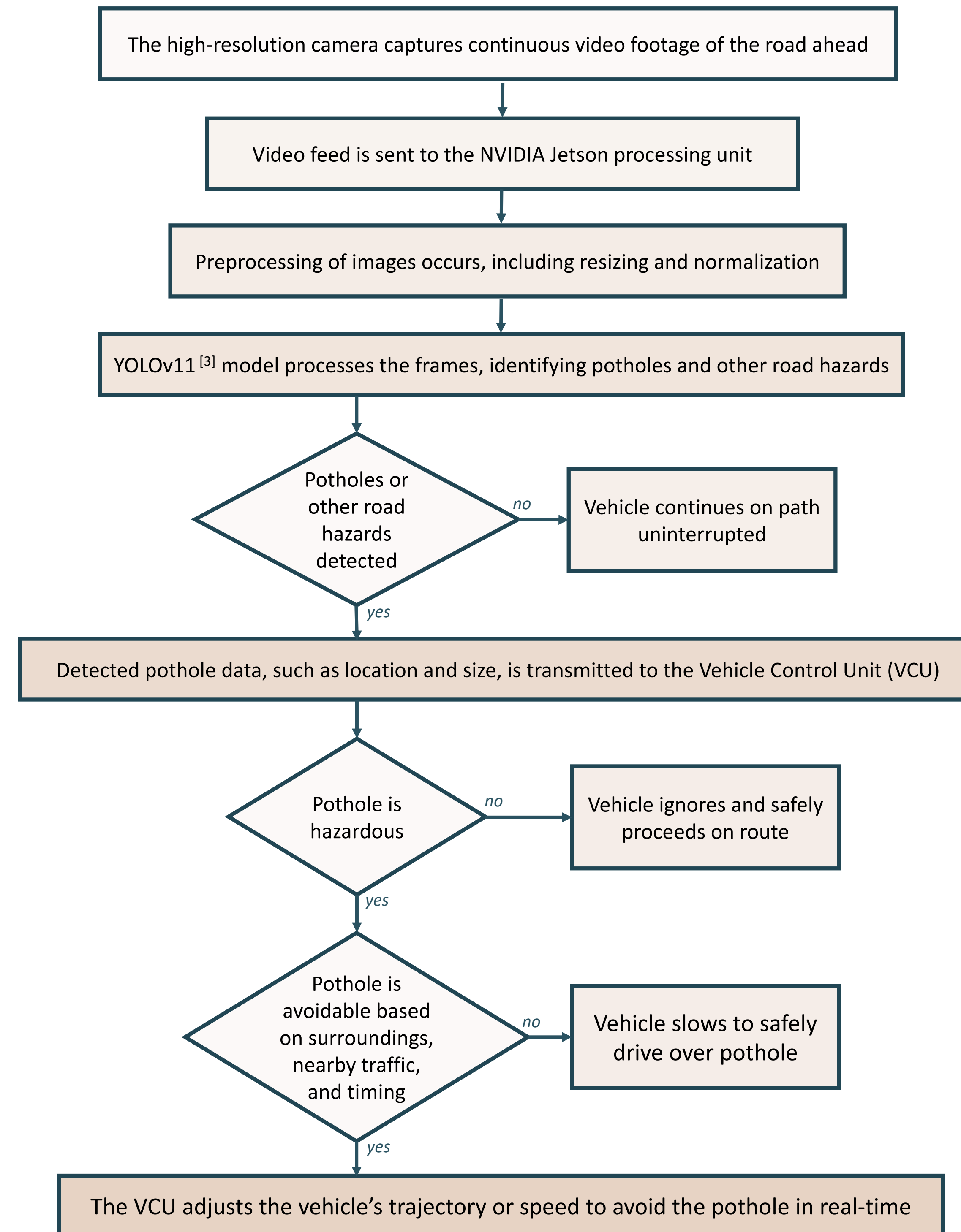
This research seeks to improve pothole and road hazard detection for autonomous vehicles using AI and object detection. By implementing an AI-detection model for real-time image processing, we aim to:

1. Enhance the accuracy of pothole detection in various environmental conditions.
2. Enable real-time decision-making to mitigate the risks associated with road hazards.
3. Promote the widespread adoption of autonomous vehicles by improving passenger safety.

## Methodology



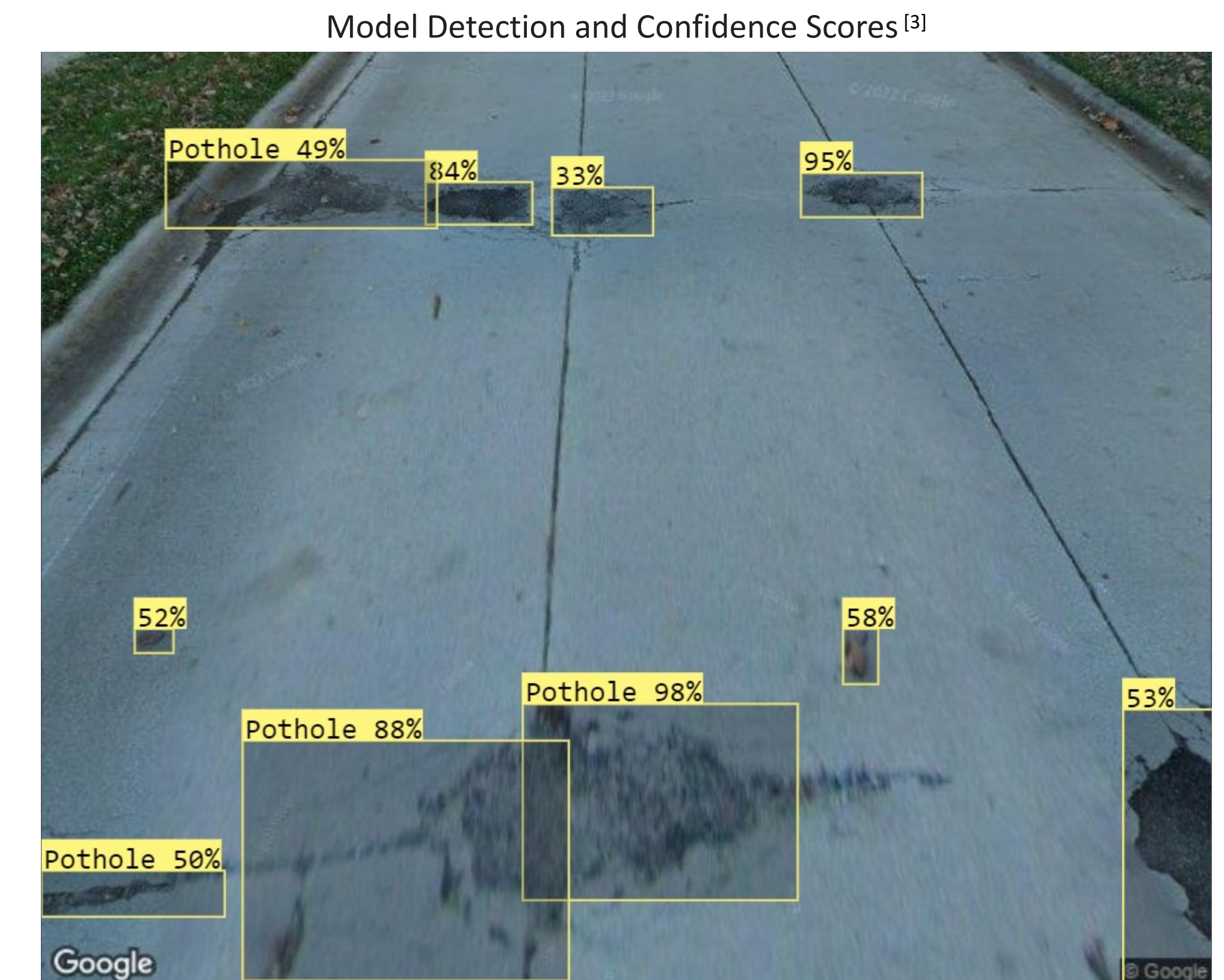
## System Design



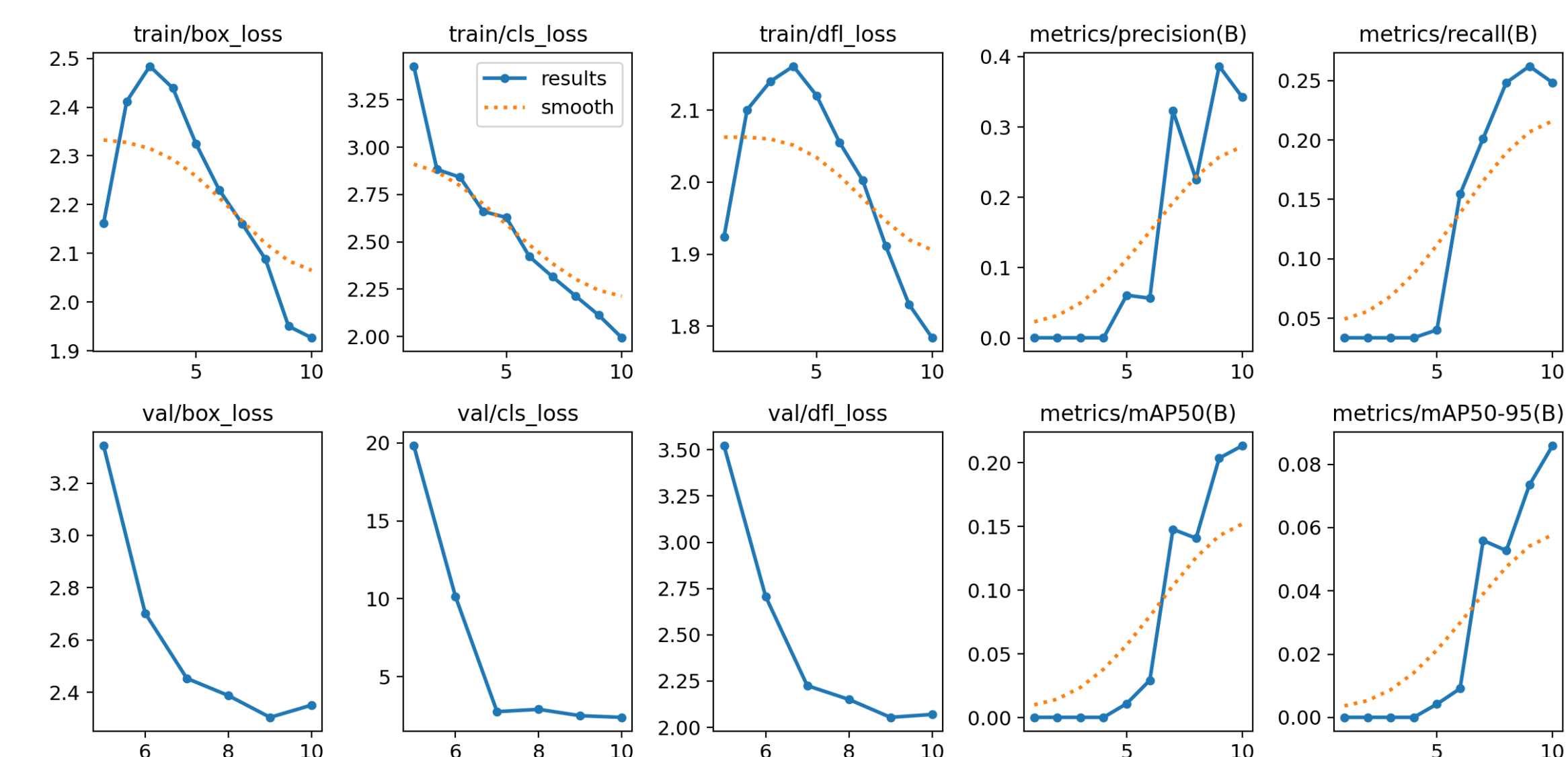
## Conclusions

This research has significant potential to improve the safety and trustworthiness of AVs, accelerating their mainstream adoption as a reliable mode of transportation. By integrating real-time detection with automated vehicle control, the system enhances the vehicle's ability to avoid hazards, ultimately improving safety and reliability. Future work will focus on refining the detection accuracy, optimizing the system for diverse road conditions, and incorporating it into existing AV technologies to overcome current limitations.

## Data & Results



Training/Validation Loss and Performance Metrics for YOLOv11 Object Detection Model<sup>[3]</sup>



## References & Acknowledgements

- [1] Google, "Google Street View API," Google Developers. [Online]. Available: <https://developers.google.com/maps/documentation/streetview/>.
- [2] Roboflow, "Roboflow: Computer vision dataset management and model training," Roboflow. [Online]. Available: <https://roboflow.com/>.
- [3] G. Jocher, et al., "YOLOv11," GitHub repository, <https://github.com/ultralytics/ultralytics>, 2024.
- We would like to thank Dr. Will Lewis from School of Information Technology, Illinois State University, for providing the opportunity to extend his project as part of this research.